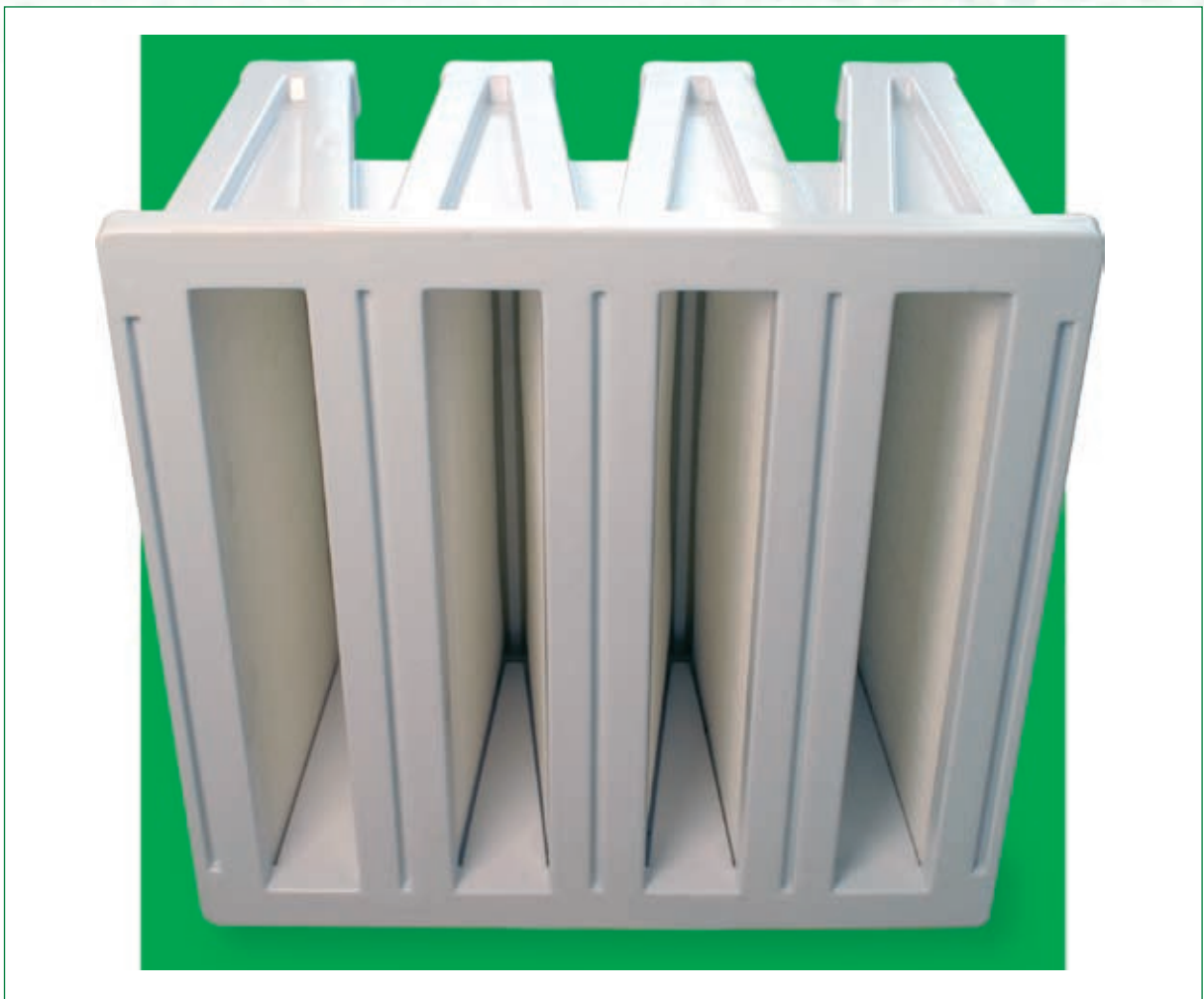


# EnviCompCell Polyester

The EnviCompCell is a robust and strong high efficiency filter for intake air and especially developed for Gas-Turbines.



The range covers F6 to F9.  
Filtermaterials are available in  
glassfibre or synthetic materials.

### Key features

- High dust holding capacity.
- Initially a low-pressure loss.
- Long lifetime/low pressure.

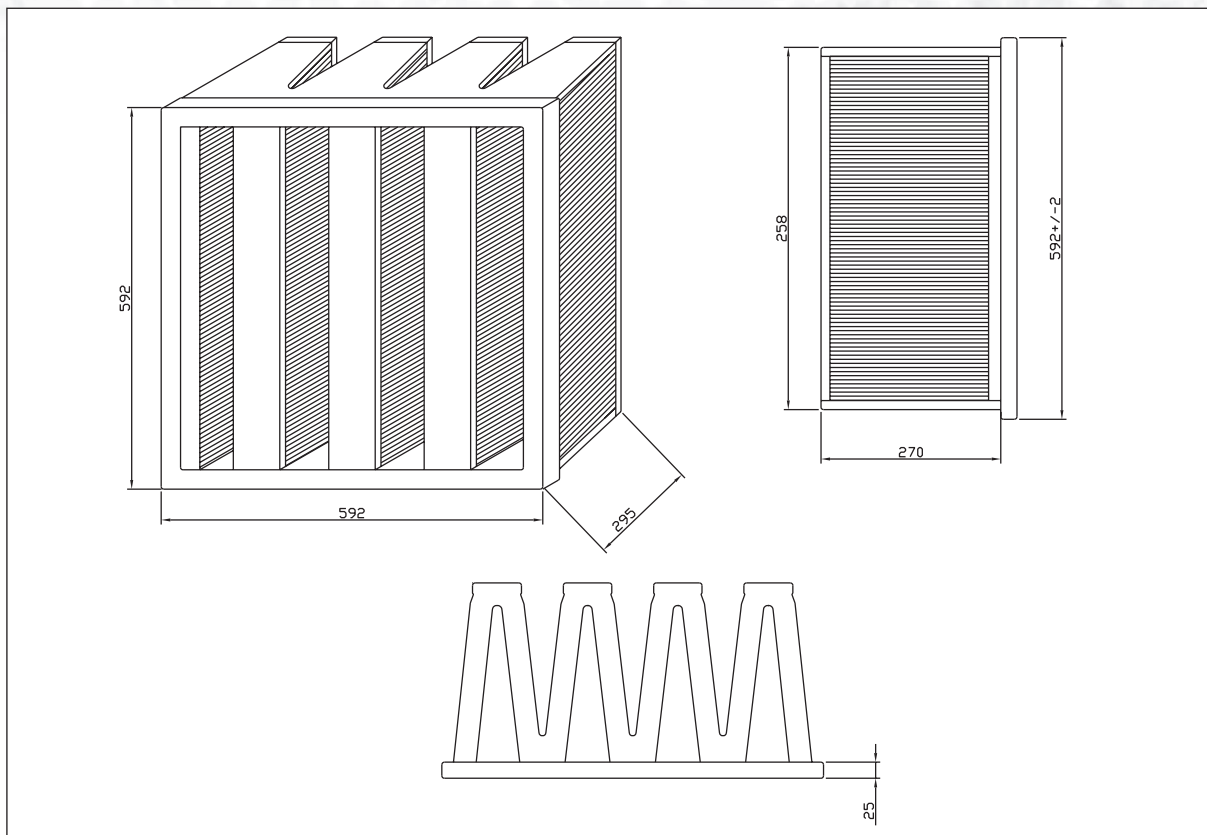
- Fits most static filterhouses  
– easy to install.
- Cleaning possibilities.

The right choice for turbo machinery.



# EnviCompCell Polyester

## Technical data



Filter class acc. to EN779		F6	F7	F8	F9
Permeability	m <sup>3</sup> /h	4250	4250	4250	4250
Pressuredrop	Pa	90	100	110	125
Filter area	m <sup>2</sup>	18	18	18	18
Filtration degree	%	98	>99	>>99	~100
Max. temperature	°C	100	100	100	100

